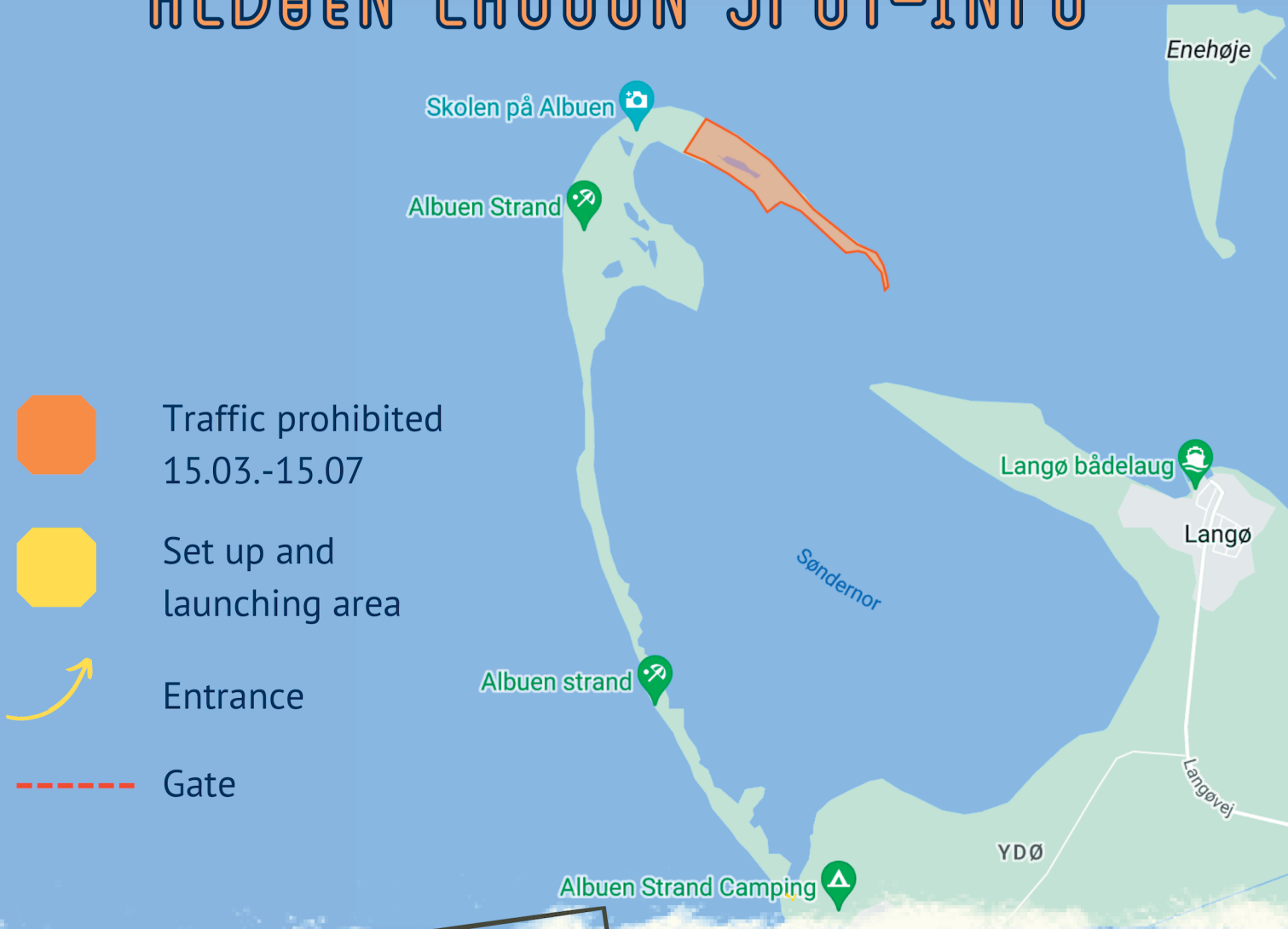


# ALBUEN LAGOON SPOT-INFO



Traffic prohibited  
15.03.-15.07



Set up and  
launching area



Entrance



Gate



Launch in the small lagoon  
by the parking space or  
walk along the dike.

It is not allowed to park, walk,  
or launch on the tidal meadows  
and reed bed areas after the gate.

Show respect towards wildlife  
and other humans! 👍



SEE YOU ON THE WATER!

[WWW.SURFSCHOOL-LOLLAND.COM](http://WWW.SURFSCHOOL-LOLLAND.COM)